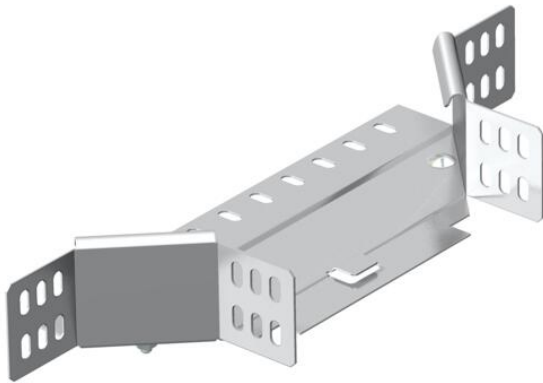


# Technical data sheet

## Add-on tee 60 A2

Item number: 7136120



Add-on tee for horizontal and vertical use. For all cable tray types of 60 mm side height.  
The fitting is shipped in an unmounted state.  
Including appropriate fastening material.



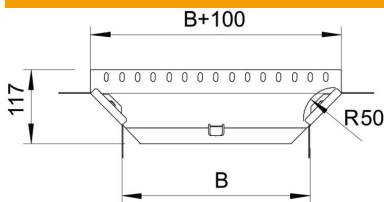
**A2** Stainless steel

**2B** Bright, treated

### Master data

Item number	7136120
Type	RAA 610 A2
Description 1	Add-on tee
Description 2	with 2 angle connectors
Manufacturer	OBO
Dimension	60x100
Material	Stainless steel 1.4301
Surface	Bright, treated
Surface standard	
Smallest sales unit	1
Unit of quantity	Piece
Weight	44.2 kg
Weight unit	kg/100 pc.

### Dimensions



Width	100 mm
Width	4 in
Height	60 mm
Height	2 in
Plate thickness	1 mm
Dimension B	100 mm
Dimension R	50 mm

# Technical data sheet

Add-on tee 60 A2

Item number: 7136120



## Technical data

Bend (angle)	90°
Connector version	Supplied connectors
Maintain electrical functions	no
Material thickness, floor plate	1 mm
NATO hole pattern	no
Change of direction	Horizontal
Rustproof steel, pickled	no
Wide-span version	no
Type of connector, cable support system	Screwed
Rail thickness	1.25 mm