

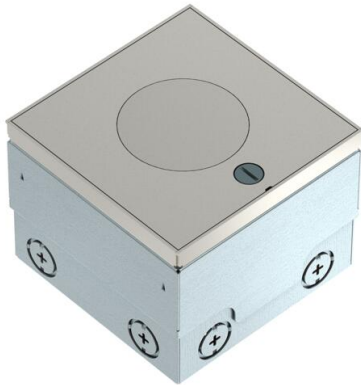
Technical data sheet

UDHOME2 floor socket, with tube body, double protective contact socket, stainless steel

Item number: 7368409



Square floor socket for use in wet-care cavity and screed floors in indoor areas. Cable exit for height-adjustable tube body. Installation housing with pre-marked insertion openings for pipes (M20/M25). Cover adjustable to top edge of floor covering using four height-adjustment supports. The minimum installation depth is 110 mm, the height-adjustment range is +25 mm. The scope of delivery contains a double protective contact socket. Up to two modular data sockets (Keystones) can be installed with optional mounting supports.



A2 Stainless steel

KGT shot peening

Master data

Item number	7368409
Type	UDHOME2 VT2 V
Description 1	Floor socket
Description 2	with tube body, double socket
Manufacturer	OBO
Dimension	140x140x110
Material	Stainless steel
Surface	shot peening
Surface standard	
Smallest sales unit	1
Unit of quantity	Piece
Weight	297 kg
Weight unit	kg/100 pc.
CO2 Footprint (GWP) Cradle-to-Gate	16,3743 kg CO2e / 1 Piece

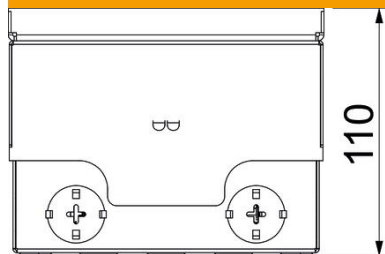
Technical data sheet

UDHOME2 floor socket, with tube body, double protective contact socket, stainless steel

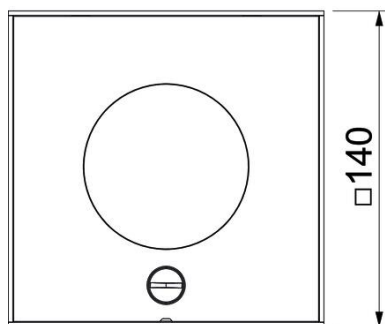
Item number: 7368409



Dimensions



Length	140 mm
Width	140 mm



Technical data

Number of mounting boxes	1
Version for	Square
Cable outlet version	Lowerable tube body
Equipment	Double VDE socket
Floor covering protection frame	no
Floor care	Wet
Cover version	Decorative plate
Floor height, max.	135 mm
Floor height, min.	110 mm
Suitable for raised floor installation	no
Suitable for cavity floor installation	yes
Suitable for wet care	yes
Suitable for underfloor ducts	no
Length of external dimensions	140 mm
Length of installation dimensions	140 mm
With floor covering recess	no
Protection rating (IP) when used	IP20
Protection rating (IP) when unused	IP45
Protection rating IK code	IK10
Vertical load, large area	to 15,000 N
Vertical load, small area	to 3,000 N
Opening mechanism	Sash lock