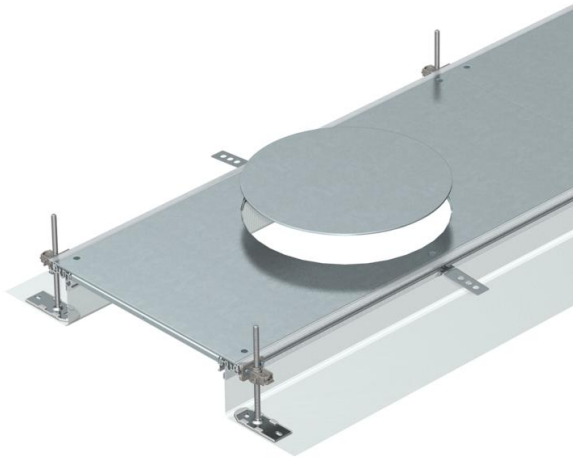


Technical data sheet

Trunking unit for GESR9, height 40–140 mm

Item number: 7424242



Ready-to-mount trunking unit with three or six device installation lids for cable laying and the installation of installation units of nominal size R9, consisting of two side profiles with attached flexible metal mesh side wall, floor covering guide profiles and trunking lid with blank mounting opening. The scope of supply contains six height-adjustable wall fixing brackets, six screed anchors and three height-adjustable cover joint supports for nominal trunking width 400 and six cover joint supports for nominal trunking widths 500 and 600. Trunking lid screwed down when delivered.

With three (for nominal trunking width 400, L = 800 mm) or six device installation covers (for nominal trunking widths 500 and 600, L = 400 mm), each with one installation opening for a round installation unit of nominal size R9.



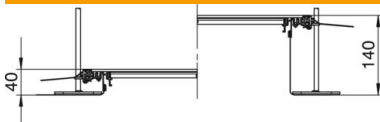
St Steel

FS Strip galvanized

Master data

Item number	7424242
Type	OKA-G50040140DR9
Description 1	Flushfloor trunking unit
Description 2	for service unit GESR9
Manufacturer	OBO
Dimension	2400x500x140
Material	Steel
Surface	Strip galvanized
Surface standard	DIN EN 10346
Smallest sales unit	2.4
Unit of quantity	Metre
Weight	1619.6 kg
Weight unit	kg/100 m
CO ₂ Footprint (GWP) Cradle-to-Gate	90,6818 kg CO ₂ e / 1 Meter

Dimensions



Length	2,400 mm
Width	500 mm

Technical data sheet

Trunking unit for GESR9, height 40–140 mm

Item number: 7424242



Technical data

Mounting opening cover	yes
Covers	6
Number of planned flush-mount units	6
Mounting system fastening type	Floor
Floor plate	no
Cover fastening, locking	no
Seal installation option	yes
Installation opening for on-floor tank	no
Decouplable	yes
Suitable for expansion joint	no
Mesh wall	yes
Trunking height, max.	140 mm
Duct height, min.	40 mm
Cover material thickness	4
Minimum screed height	40
With connection opening	yes
With equipotential bonding	no
With separating retainer	no
With overhang	yes
Mounting opening	For service outlet
Mounting opening	Round
Height-adjustment range, max.	140 mm
Height-adjustment range, min.	40 mm
Removable cover	yes