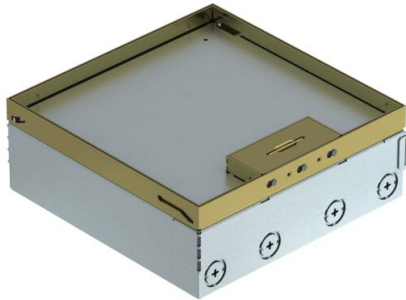


Technical data sheet

UDHOME9 floor box, two double protective contact socket, brass

Item number: 7427304



Square floor box for use in dry-cleaned cavity and screed floors in indoor areas. Installation housing with pre-marked insertion openings for pipes (M25). With three UT4 universal supports and two double sockets. Cover adjustable to top edge of floor covering using four height-adjustment supports. The minimum installation depth is 95 mm, the height-adjustment range + 30 mm.

The scope of supply contains three universal supports UT4 for installation of Modul 45® devices. One universal support is equipped with two double protective contact sockets in pure white. A further universal support is equipped with two cover plates for standard device installation and the third universal support is equipped with two blanking covers.

Surfaces visible in the floor covering made of brass.



CuZn
37 Brass

Master data

Item number	7427304
Type	UDHOME9 2M UT V
Description 1	Floor box, complete
Description 2	2x2 protective contact sockets
Manufacturer	OBO
Material	Brass
Smallest sales unit	1
Unit of quantity	Piece
Weight	573 kg
Weight unit	kg/100 pc.
CO2 Footprint (GWP) Cradle-to-Gate	21,3973 kg CO2e / 1 Piece

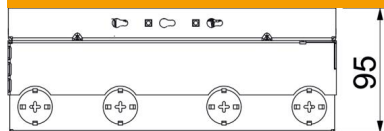
Technical data sheet

UDHOME9 floor box, two double protective contact socket, brass

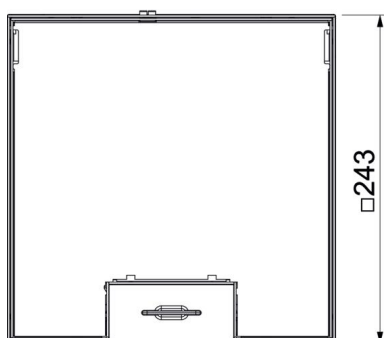
Item number: 7427304



Dimensions



Length	246 mm
Width	246 mm



Technical data

Cable outlet version	Swivellable cord outlet
Equipment	3 UT4, 2 double VDE socket
Cover version	Floor covering recess
Screed height, max.	110 mm
Screed height, min.	95 mm
Floor height, max.	125 mm
Floor height, min.	95 mm
Suitable for underfloor ducts	no
Length of external dimensions	243 mm
Length of installation dimensions	246 mm
With floor covering recess	yes
Height-adjustment range, max.	125 mm
Height-adjustment range, min.	95 mm
Protection rating (IP) when used	IP20
Protection rating (IP) when unused	IP40
Protection rating IK code	IK10
Vertical load, large area	to 5,000 N
Vertical load, small area	to 3,000 N
Opening mechanism	Handle
Floor covering thickness	15 mm