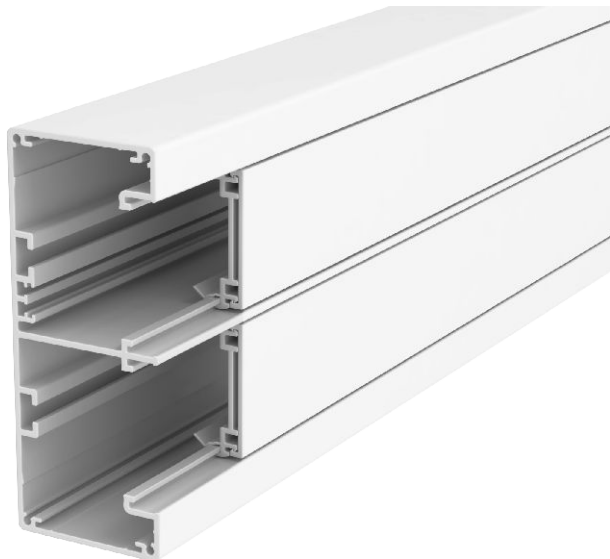


# Technical data sheet

Device installation trunking Rapid 45-2, trunking width 130, trunking height 53  
Item no. 6112500



Aluminium complete device installation trunking, consisting of a base and cover. The base has no floor perforation.

Note:

For anodised device installation trunking and fittings made from aluminium, light colour differences caused by permitted scatter due to the material and process conditions cannot be avoided (according to DIN 17 611). 45 mm devices can be clicked in directly. When using PC/ABS hood fittings, there may be colour differences due to the different materials.

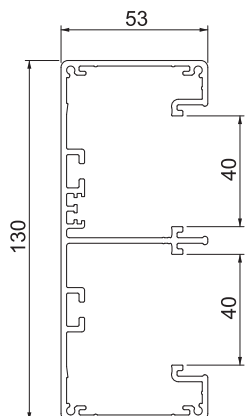


**Alu** Aluminium

## Master data

|                          |                                |
|--------------------------|--------------------------------|
| Item no.                 | 6112500                        |
| Type                     | GA-53130RW                     |
| Description 1            | Device installation trunking   |
| Description 2            | Rapid 45-2, 2-compartment,alum |
| Dimension                | 53x130x2000                    |
| Colour                   | Pure white                     |
| RAL number               | 9010                           |
| Material                 | Aluminium                      |
| Material symbol          | Alu                            |
| Smallest sales unit (VG) | 2 m                            |
| Weight                   | 326,50 kg/100 m                |

## Technical data



|                                 |                                     |
|---------------------------------|-------------------------------------|
| Length                          | 2.000,00 mm                         |
| Width                           | 130,00 mm                           |
| Height                          | 53,00 mm                            |
| Number of covers                | 2                                   |
| Number of insertable partitions | 2                                   |
| Rear panel version (inner side) | Continuous C profile                |
| Rectangular shape               | <input checked="" type="checkbox"/> |
| Cable retaining clip            | <input type="checkbox"/>            |
| Duct connector                  | <input type="checkbox"/>            |
| Cover mounting type             | Internal                            |
| Mounting perforation in base    | <input type="checkbox"/>            |
| Cover width                     | 45 mm                               |
| Cover width 2                   | 45,00 mm                            |
| Cover width 3                   | 0,00 mm                             |
| Cover supplied                  | <input checked="" type="checkbox"/> |
| Protective film                 | <input checked="" type="checkbox"/> |
| Symmetrical                     | <input checked="" type="checkbox"/> |