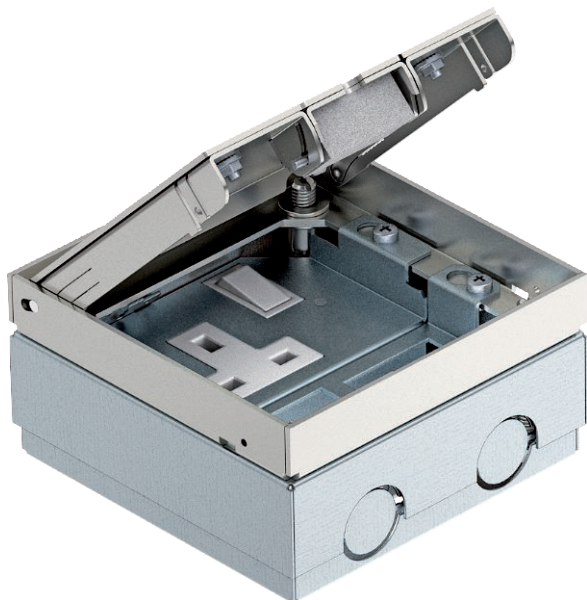


Technical data sheet

UDHOME2 floor socket, with stainless steel cover,
equipped
Item no. 7368393



Square installation unit for use in dry-care cavity and screed floors in indoor areas. Installation housing with pre-marked insertion openings for pipes (M25). Cover adjustable to top edge of floor covering using four height-adjustment supports. The minimum installation depth is 75 mm, the height-adjustment range +20 mm.

The scope of delivery contains one BS socket with switch and a mounting support for up to two LJ6C data modules.

Surfaces visible in the floor covering made of brushed stainless steel.

The load-bearing capacity of 15 kN is only guaranteed when in an unused state.



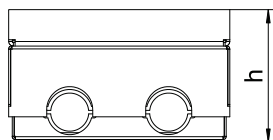
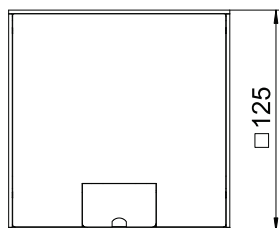
VA Stainless steel, rustproof 1.4301

Brushed and laminated

Master data

Item no.	7368393
Type	UDHOME2 BV BS
Description 1	Floor socket, complete
Description 2	with BS socket, VA cover
Dimension	125x125x75
Material	Stainless steel, material no. 1.4301
Material symbol	A2
Surface	Brushed and laminated
Surface symbol	GUF
Smallest sales unit (VG)	1 Piece
Weight	185,00 kg/100 pc.

Technical data



Dimension h	75,00 mm
Number of mounting boxes	1
Cable outlet version	Swivellable cord outlet
Floor care	Dry
Version for	Square
Floor height	75-95 mm
Suitable for wet care	<input type="checkbox"/>
Height-adjustment range	75,00 - 95,00 mm
Opening mechanism	Tool