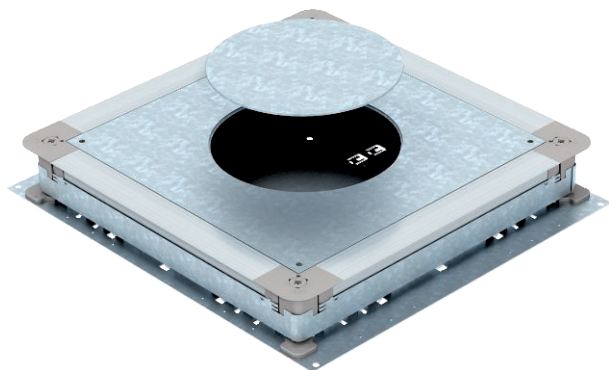


# Technical data sheet

UGD350-3 for round installation units, for screed  
height 70–125 mm  
Item no. 7410116



Underfloor accessory socket for screed-covered underfloor installation ducts with sheet steel side walls. To mount installation units of the selected nominal size. Height can be infinitely adjusted to the nominal screed height (rapid adjustment possible) and the screed can be worked flush to the screed scraping edge. With noise decoupling option after screed laying and can be used with system accessories, also for heavy-duty application.

Side walls prepared for duct widths of 190, 250 and 350 mm.

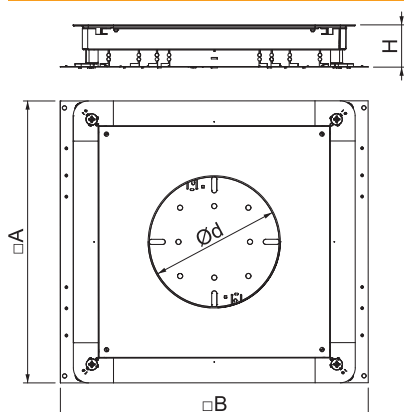


<b>St</b>	Steel
<b>FS</b>	Strip galvanised

## Master data

Item no.	7410116
Type	UGD 350-3 R4
Description 1	Underfloor box empty
Description 2	350-3 for GESR4
Dimension	510x467x70
Material	Steel
Material symbol	St
Surface	Strip galvanised
Surface to DIN	DIN EN 10346
Surface symbol	FS
Smallest sales unit (VG)	1 Piece
Weight	910,00 kg/100 pc.

## Technical data



Dimension A	467,00 mm
Dimension B	510,00 mm
Dimension a	362,00 mm
Dimension b	383,00 mm
Dimension D Ø	215,00 mm
Floor plate	<input checked="" type="checkbox"/>
Seal installation option	<input checked="" type="checkbox"/>
Installation opening for on-floor tank	<input type="checkbox"/>
Installation opening for flush-mount unit	Round
Decouplable	<input checked="" type="checkbox"/>
Screed height	70-125 mm
For pipe connection	<input type="checkbox"/>
Suitable for screed-flush closed underfloor ducts	<input type="checkbox"/>
Suitable for screed-covered underfloor ducts	<input checked="" type="checkbox"/>
Suitable for underfloor ducts	<input checked="" type="checkbox"/>
Duct width	190,00 - 350,00 mm
Trunking height	28,00 - 48,00 mm
Minimum screed height	70
Nominal size	350,00 mm
Nominal size for device installation units	R4
Height-adjustment range	70,00 - 125,00 mm