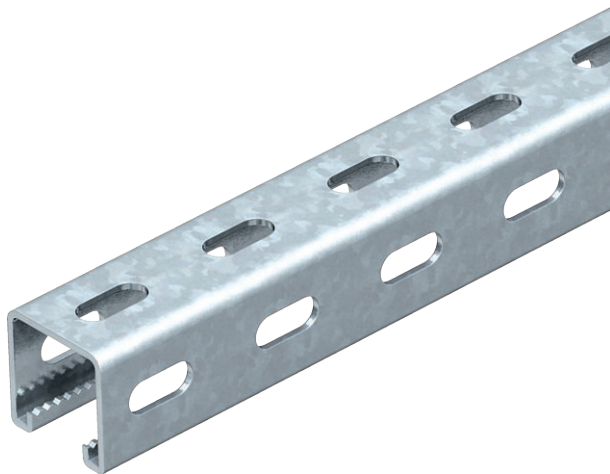


Technical data sheet

MS4141PP mounting rail, slot 22 mm, perforated

Item no. 1122500



Heavy-duty C profile rail for individual installation of support constructions, e.g. for cable trays or as a panel for switchgear cabinets. Can also be used for cable routing, in conjunction with clamp clips with a U foot.

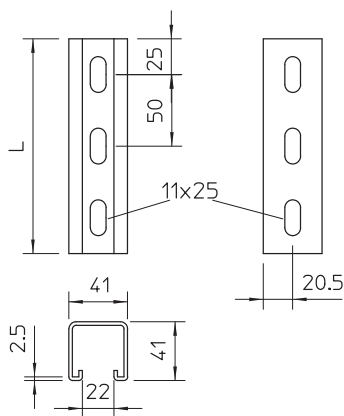


St	Steel
FT	Hot-dip galvanised

Master data

Item no.	1122500
Type	MS4141PP0300FT
Description 1	Profile rail
Description 2	perforated, slot 22mm
Dimension	300x41x41
Material	Steel
Material symbol	St
Surface	Hot-dip galvanised
Surface to DIN	DIN EN ISO 1461
Surface symbol	FT
Smallest sales unit (VG)	1 Piece
Weight	67,00 kg/100 pc.

Technical data



Length	300,00 mm
Width	41,00 mm
Height	41,00 mm
Dimension L	300,00 mm
Breakable	<input type="checkbox"/>
Dimension WxH	41x41 mm
Version	Single profile
Type of perforation	3 sides perforated
Drill hole spacing, centre	50,00 mm
Suitable for maintaining electrical function	<input type="checkbox"/>
Hole size	11x25 mm
Material thickness	2,50 mm
With perforation	<input checked="" type="checkbox"/>
With toothing	<input checked="" type="checkbox"/>
Profile shape	C profile
Slot width	22,00 mm
Static value A	
Static value Iy	
Static value Iz	
Static value Wy	
Static value Wz	